

# National Parks and Wildlife Service

---

## *Conservation Objectives Series*

---

Baldoyle Bay SPA 004016



*An Roinn*  
*Ealaíon, Oidhreachta agus Gaeltachta*  

---

*Department of*  
*Arts, Heritage and the Gaeltacht*



**National Parks and Wildlife Service,  
Department of Arts, Heritage and the Gaeltacht,**

**7 Ely Place, Dublin 2, Ireland.**

**Web: [www.npws.ie](http://www.npws.ie)**

**E-mail: [nature.conservation@ahg.gov.ie](mailto:nature.conservation@ahg.gov.ie)**

**Citation:**

**NPWS (2013) Conservation Objectives: Baldoyle Bay SPA 004016. Version 1.  
National Parks and Wildlife Service, Department of Arts, Heritage and the  
Gaeltacht.**

**Series Editor: Rebecca Jeffrey**

**ISSN 2009-4086**

## Introduction

The overall aim of the Habitats Directive is to maintain or restore the favourable conservation status of habitats and species of community interest. These habitats and species are listed in the Habitats and Birds Directives and Special Areas of Conservation and Special Protection Areas are designated to afford protection to the most vulnerable of them. These two designations are collectively known as the Natura 2000 network.

European and national legislation places a collective obligation on Ireland and its citizens to maintain habitats and species in the Natura 2000 network at favourable conservation condition. The Government and its agencies are responsible for the implementation and enforcement of regulations that will ensure the ecological integrity of these sites.

A site-specific conservation objective aims to define favourable conservation condition for a particular habitat or species at that site.

The maintenance of habitats and species within Natura 2000 sites at favourable conservation condition will contribute to the overall maintenance of favourable conservation status of those habitats and species at a national level.

Favourable conservation status of a habitat is achieved when:

- its natural range, and area it covers within that range, are stable or increasing, and
- the specific structure and functions which are necessary for its long-term maintenance exist and are likely to continue to exist for the foreseeable future, and
- the conservation status of its typical species is favourable.

The favourable conservation status of a species is achieved when:

- population dynamics data on the species concerned indicate that it is maintaining itself on a long-term basis as a viable component of its natural habitats, and
- the natural range of the species is neither being reduced nor is likely to be reduced for the foreseeable future, and
- there is, and will probably continue to be, a sufficiently large habitat to maintain its populations on a long-term basis.

### Notes/Guidelines:

1. The targets given in these conservation objectives are based on best available information at the time of writing. As more information becomes available, targets for attributes may change. These will be updated periodically, as necessary.
2. An appropriate assessment based on these conservation objectives will remain valid even if the targets are subsequently updated, providing they were the most recent objectives available when the assessment was carried out. It is essential that the date and version are included when objectives are cited.
3. Assessments cannot consider an attribute in isolation from the others listed for that habitat or species, or for other habitats and species listed for that site. A plan or project with an apparently small impact on one attribute may have a significant impact on another.
4. Please note that the maps included in this document do not necessarily show the entire extent of the habitats and species for which the site is listed. This should be borne in mind when appropriate assessments are being carried out.
5. When using these objectives, it is essential that the relevant backing/supporting documents are consulted, particularly where instructed in the targets or notes for a particular attribute.

## Qualifying Interests

\* indicates a priority habitat under the Habitats Directive

---

004016	Baldoyle Bay SPA
A046	Brent Goose <i>Branta bernicla hrota</i>
A048	Shelduck <i>Tadorna tadorna</i>
A137	Ringed Plover <i>Charadrius hiaticula</i>
A140	Golden Plover <i>Pluvialis apricaria</i>
A141	Grey Plover <i>Pluvialis squatarola</i>
A157	Bar-tailed Godwit <i>Limosa lapponica</i>
A999	Wetlands

**Please note that this SPA overlaps with Baldoyle Bay SAC (000199). See map 2. The conservation objectives for this site should be used in conjunction with those for the overlapping SAC as appropriate.**

## Supporting documents, relevant reports & publications

*Supporting documents, NPWS reports and publications are available for download from: [www.npws.ie/Publications](http://www.npws.ie/Publications)*

**Year :** 2012  
**Title :** Baldoyle Bay SPA (site code 4016) Conservation Objectives Supporting Document V1  
**Author :** NPWS  
**Series :** Unpublished report to NPWS

---

**A046**                      **Brent Goose *Branta bernicla hrota***

**To maintain the favourable conservation condition of Light-bellied Brent Goose in Baldoyle Bay SPA, which is defined by the following list of attributes and targets:**

<b>Attribute</b>	<b>Measure</b>	<b>Target</b>	<b>Notes</b>
Population trend	Percentage change	Long term population trend stable or increasing	Waterbird population trends are presented in part four of the conservation objectives supporting document
Distribution	Range, timing and intensity of use of areas	No significant decrease in the range, timing and intensity of use of areas by light-bellied brent goose, other than that occurring from natural patterns of variation	Waterbird distribution from the 2011/2012 waterbird survey programme is discussed in part five of the conservation objectives supporting document

## Conservation Objectives for : Baldoyle Bay SPA [004016]

### A048 *Shelduck Tadorna tadorna*

To maintain the favourable conservation condition of Shelduck in Baldoyle Bay SPA, which is defined by the following list of attributes and targets:

Attribute	Measure	Target	Notes
Population trend	Percentage change	Long term population trend stable or increasing	Waterbird population trends are presented in part four of the conservation objectives supporting document
Distribution	Range, timing and intensity of areas	No significant decrease in the range, timing or intensity of use of areas by shelduck, other than that occurring from natural patterns of variation	Waterbird distribution from the 2011/2012 waterbird survey programme is discussed in part five of the conservation objectives supporting document

## Conservation Objectives for : Baldoyle Bay SPA [004016]

### A137 Ringed Plover *Charadrius hiaticula*

To maintain the favourable conservation condition of Ringed Plover in Baldoyle Bay SPA, which is defined by the following list of attributes and targets:

Attribute	Measure	Target	Notes
Population trend	Percentage change	Long term population trend stable or increasing	Population trends are presented in part four of the conservation objectives supporting document
Distribution	Range, timing and intensity of use of areas	No significant decrease in the range, timing or intensity of use of areas by ringed plover, other than that occurring from natural patterns of variation	Waterbird distribution from the 2011/2012 waterbird survey programme is discussed in part five of the conservation objectives supporting document



## Conservation Objectives for : Baldoyle Bay SPA [004016]

### A140 Golden Plover *Pluvialis apricaria*

To maintain the favourable conservation condition of Golden Plover in Baldoyle Bay SPA, which is defined by the following list of attributes and targets:

Attribute	Measure	Target	Notes
Population trend	Percentage change	Long term population trend stable or increasing	Population trends are presented in part four of the conservation objectives supporting document
Distribution	Range, timing and intensity of use of areas	No significant decrease in the range, timing or intensity of use of areas by golden plover, other than that occurring from natural patterns of variation	Waterbird distribution from the 2011/2012 waterbird survey programme is discussed in part five of the conservation objectives supporting document

## Conservation Objectives for : Baldoyle Bay SPA [004016]

### A141 Grey Plover *Pluvialis squatarola*

To maintain the favourable conservation condition of Grey Plover in Baldoyle Bay SPA, which is defined by the following list of attributes and targets:

Attribute	Measure	Target	Notes
Population trend	Percentage change	Long term population trend stable or increasing	Population trends are presented in part four of the conservation objectives supporting document
Distribution	Range, timing and intensity of use of areas	No significant decrease in the range, timing or intensity of use of areas by grey plover, other than that occurring from natural patterns of variation	Waterbird distribution from the 2011/2012 waterbird survey programme is discussed in part five of the conservation objectives supporting document

**A157 Bar-tailed Godwit *Limosa lapponica***

**To maintain the favourable conservation condition of Bar-tailed Godwit in Baldoyle Bay SPA, which is defined by the following list of attributes and targets:**

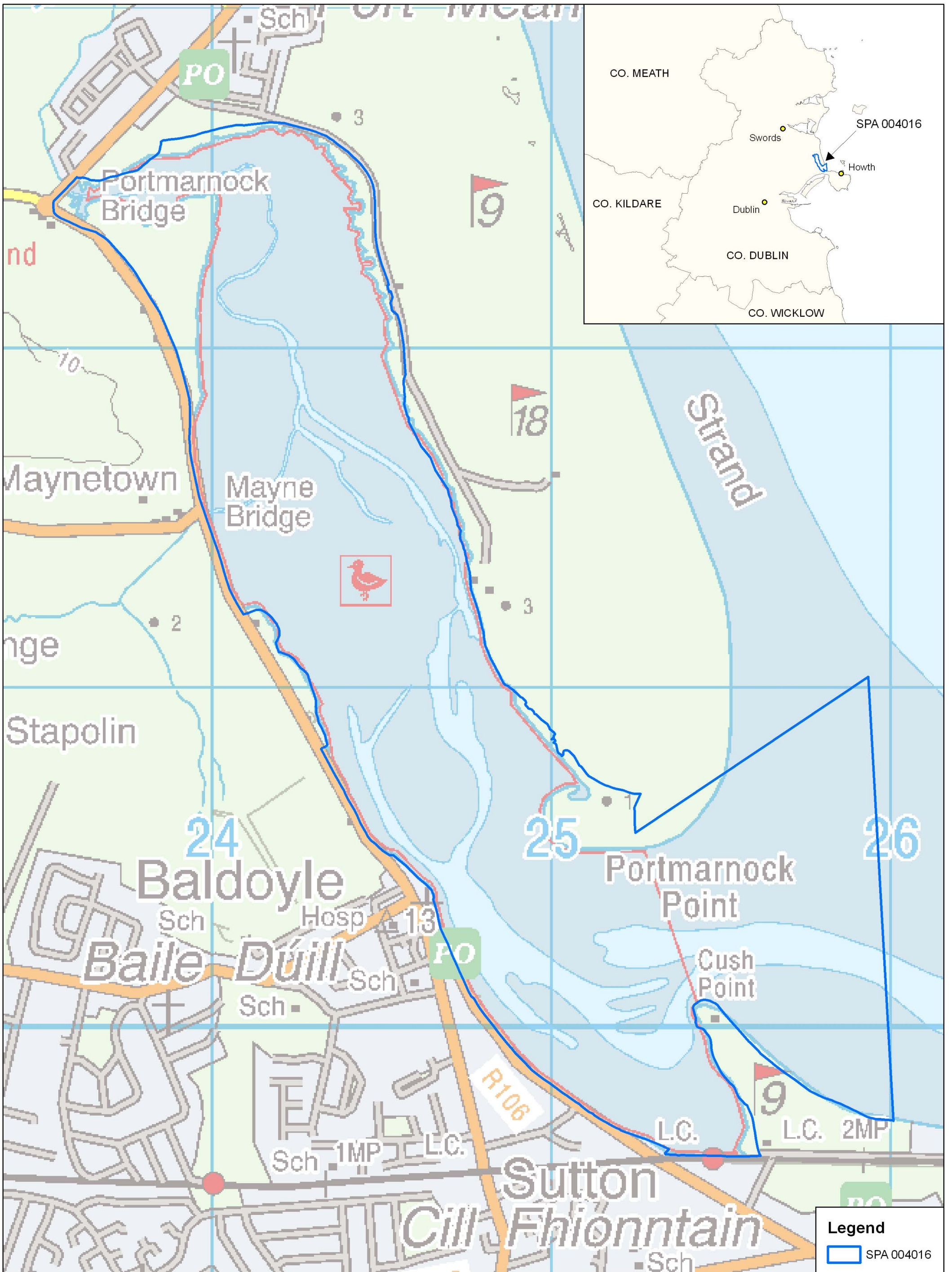
<b>Attribute</b>	<b>Measure</b>	<b>Target</b>	<b>Notes</b>
Population trend	Percentage change	Long term population trend stable or increasing	Population trends are presented in part four of the conservation objectives supporting document
Distribution	Range, timing and intensity of use of areas	No significant decrease in the range, timing or intensity of use of areas by bar-tailed godwit, other than that occurring from natural patterns of variation	Waterbird distribution from the 2011/2012 waterbird survey programme is discussed in part five of the conservation objectives supporting document

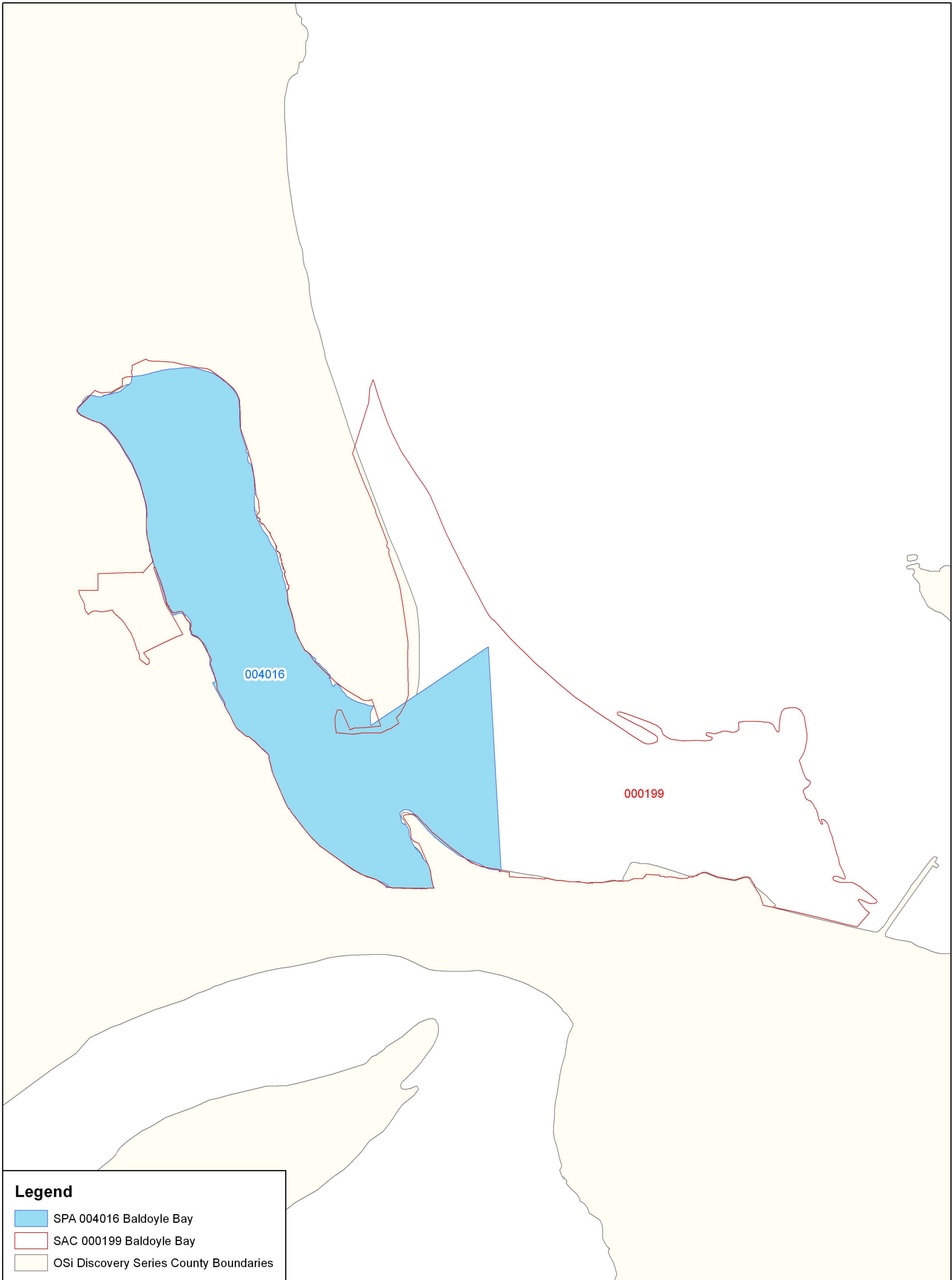
## Conservation Objectives for : Baldoyle Bay SPA [004016]

### A999 Wetlands

**To maintain the favourable conservation condition of the wetland habitat in Baldoyle Bay SPA, which is defined by the following list of attributes and targets:**

<b>Attribute</b>	<b>Measure</b>	<b>Target</b>	<b>Notes</b>
Habitat area	Hectares	The permanent area occupied by the wetland habitat should be stable and not significantly less than the area of 263ha, other than that occurring from natural patterns of variation	The wetland habitat area was estimated as 263ha using OSi data and relevant orthophotographs. For further information see part three of the conservation objectives supporting document





**Legend**

- SPA 004016 Baldoyle Bay
- SAC 000199 Baldoyle Bay
- OSi Discovery Series County Boundaries