

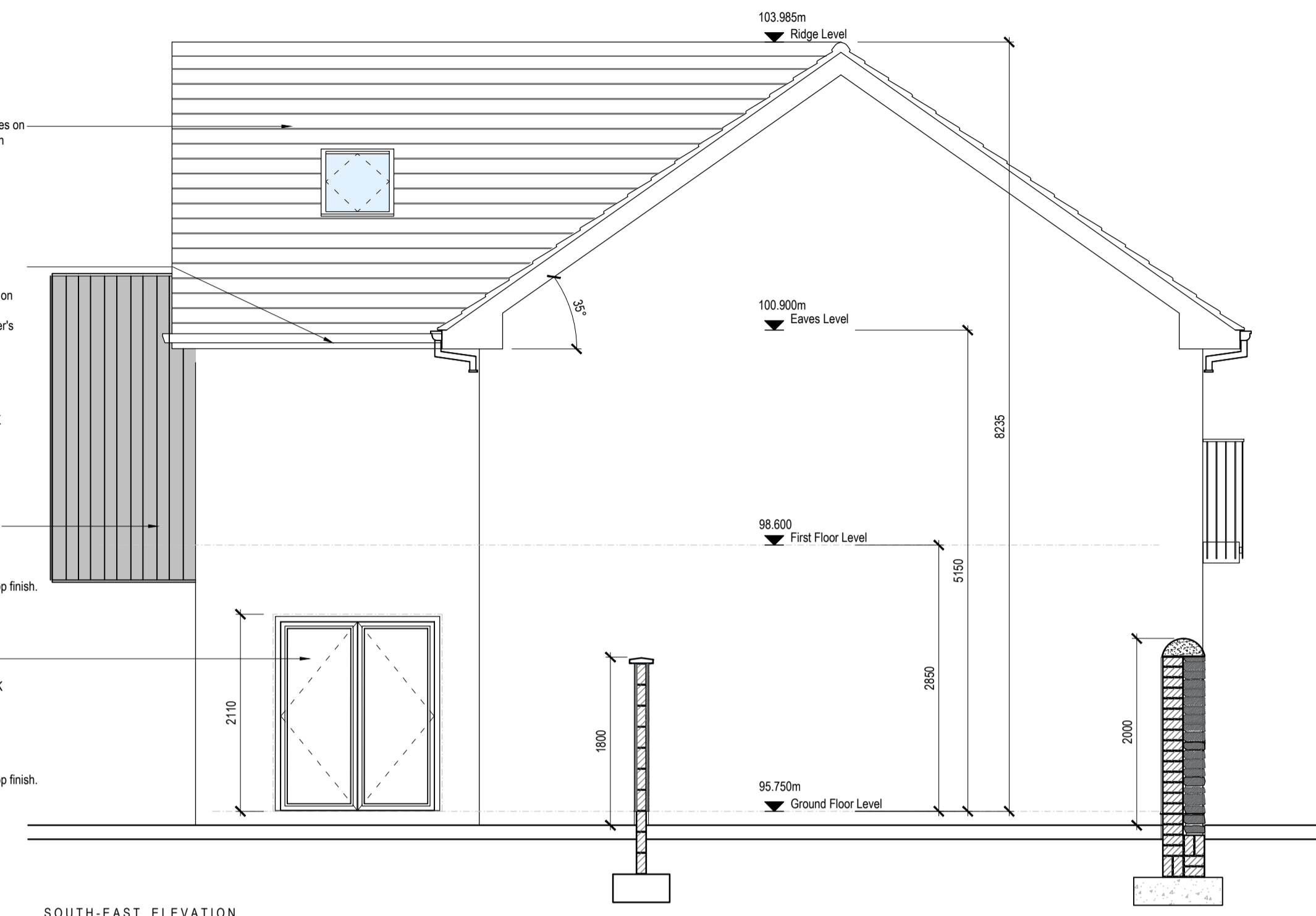
DO NOT SCALE FROM THIS DRAWING. USE FIGURED DIMENSIONS IN ALL CASES.
 VERIFY DIMENSIONS ON SITE AND REPORT ANY DISCREPANCIES TO THE ARCHITECTS IMMEDIATELY.
 THIS DRAWING IS COPYRIGHT AND MAY ONLY BE REPRODUCED WITH THE ARCHITECTS PERMISSION.

NOTES

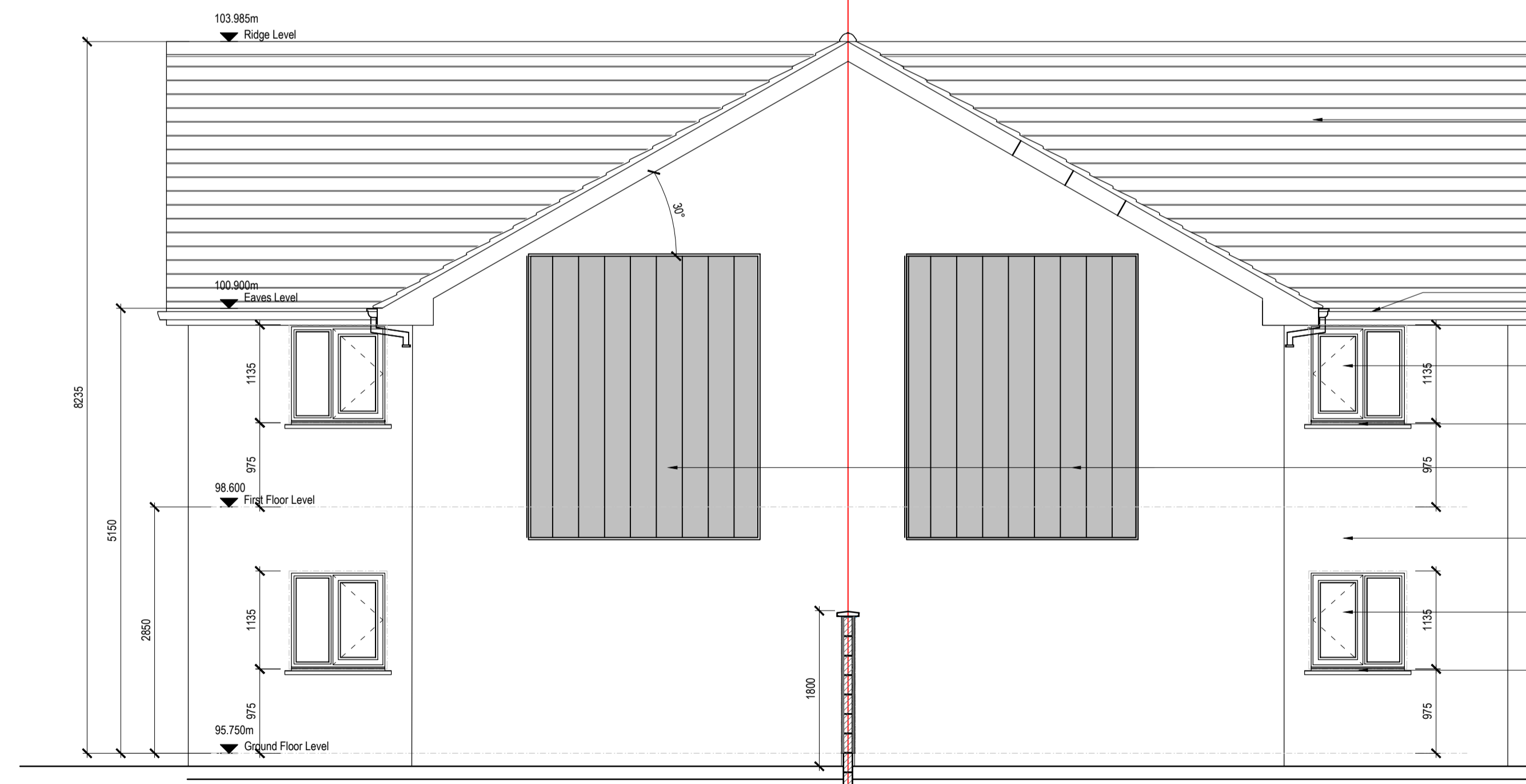


NORTH-EAST ELEVATION

- H85-115: Selected Colour Concrete Flat Roof Tiles on 35X50 mm VAC-VAC Treated Timber Battens on Prefabricated Roof Trusses @ 400mm c/c to engineers design & specification.
- R10-311: Selected colour proprietary uPVC 120mm profiled gutters & R10-370: 100 mm proprietary uPVC Downpipes on G20-311: 22mm WBP Plywood Grounds. Provide additional support as required to Engineer's specification.
- L10-330: Selected colour polyester powder coated thermally broken triple glazed aluminium window & door system. U-Value to be 1.0 W/m²K min.
- Precast concrete window sill
- H31-120 METAL: Seamlock Zinc Covering to bay
- M60-170 Masonry White paint coating to M20-110 external rendered walls with Fine Knapp finish.
- L10-330: Selected colour polyester powder coated thermally broken triple glazed aluminium window & door system. U-Value to be 1.0 W/m²K min.
- Precast concrete window sill
- M60-170 Selected Colour paint coating to M20-110 external rendered walls with Fine Knapp finish.

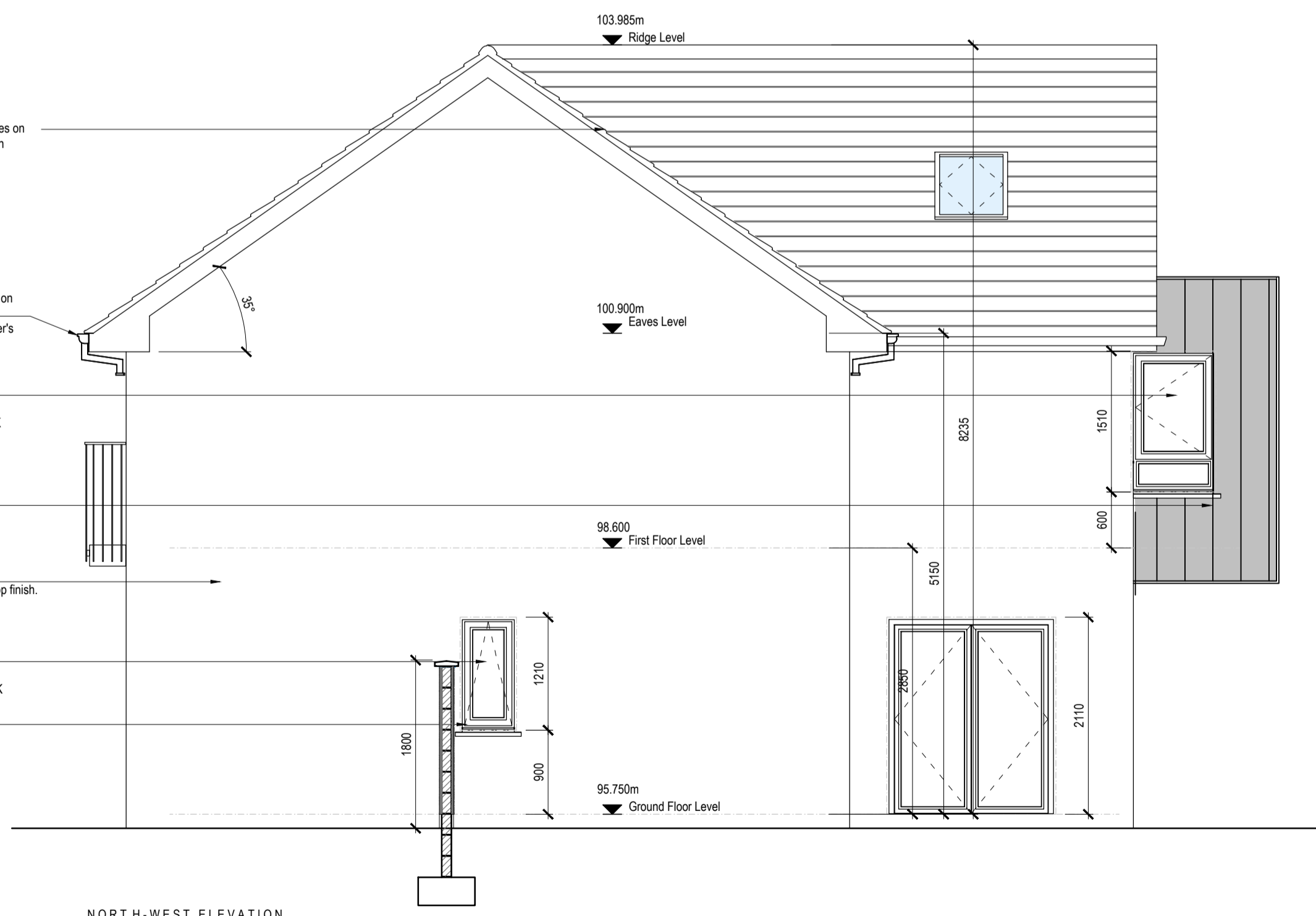


SOUTH-EAST ELEVATION



SOUTH-WEST ELEVATION

- H85-115: Selected Colour Concrete Flat Roof Tiles on 35X50 mm VAC-VAC Treated Timber Battens on Prefabricated Roof Trusses @ 400mm c/c to engineers design & specification.
- R10-311: Selected colour proprietary uPVC 120mm profiled gutters & R10-370: 100 mm proprietary uPVC Downpipes on G20-311: 22mm WBP Plywood Grounds. Provide additional support as required to Engineer's specification.
- L10-330: Selected colour polyester powder coated thermally broken triple glazed aluminium window & door system. U-Value to be 1.0 W/m²K min.
- Precast concrete window sill
- H31-120 METAL: Seamlock Zinc Covering to bay
- M60-170 Masonry White paint coating to M20-110 external rendered walls with Fine Knapp finish.
- L10-330: Selected colour polyester powder coated thermally broken triple glazed aluminium window & door system. U-Value to be 1.0 W/m²K min.
- Precast concrete window sill



NORTH-WEST ELEVATION

REV	DATE	DRAWN	NOTES

CJFA ARCHITECTS
C.J. Falconer + Associates ARCHITECTS

St. Patrick's House, Newtown, Waterford, Ireland. X91-RR76
 t: +353 (0)51 878888 f: +353 (0)51 878794 e: mail@cjfa.ie w: www.cjfa.ie

DWG SERIES: TENDER	
CLIENT: TIPPERARY COUNTY COUNCIL	JOB: Social Housing Development at Grove Street, Roscrea, Co. Tipperary
DRAWING: Proposed 2 Storey - 1 Bed Apartment Units Units 4 - 7 The Crescent Elevations	
DATE: JULY 2023	SCALE: 1:50
DRAWN: Kevin O'Connell	CHECKED: #
JOB NUMBER: 2021012	DWG NUMBER: TR-401
REVISION:	

